



Step by Step on Installing Drivers (Windows)

(Drivers are not needed on Mac computers.)

Step 1: Connect your Cricut Mini™ machine to your computer.

Step 2: Power on your Cricut Mini™ machine.

Step 3: Cancel or close any Windows prompts to install drivers
(see Fig.1: Windows XP; Fig.2: Windows Vista; Fig.3: Windows 7).

Step 4: Open the Cricut Craft Room™ design tool desktop application. (You can download and install the Cricut Craft Room™ design tool at <http://www.cricut.com/craftroom/>)

Step 5: While on the log-in screen, a driver installation pop-up will appear:
(see Fig.4). Click **Next** and follow the driver installation instructions.

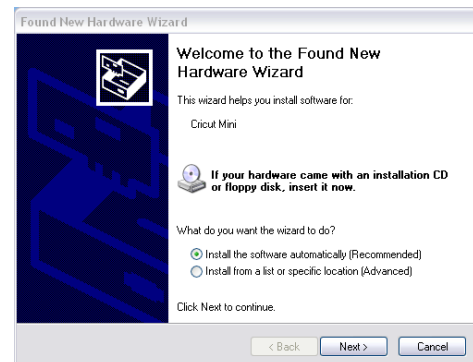


Fig.1

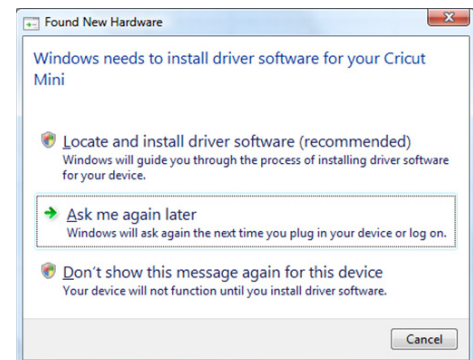


Fig.2

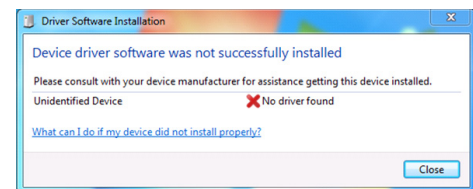


Fig.3

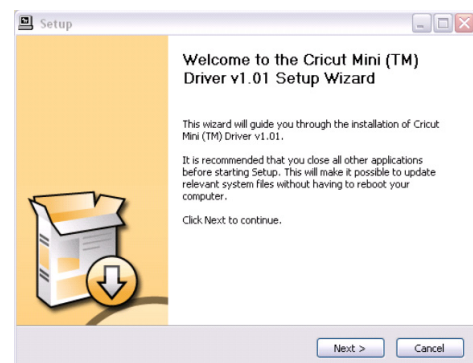


Fig.4

Step by Step on Installing Drivers (Windows), Continued

Step 6: If you receive any notifications from Windows during the installation, select **Continue Anyway** or **Install** (see Fig.5: Windows XP; Fig.6: Windows Vista and Windows 7).

Step 7: At the end of the installation, you will need to disconnect and reconnect your Cricut Mini™ machine. Then click **Finish** (see Fig.7).

Note: If you click **Finish** before disconnecting and reconnecting your Cricut Mini™ machine, you may see the message in Fig.8. Click **No**, disconnect and reconnect your machine, and then click **Finish**.

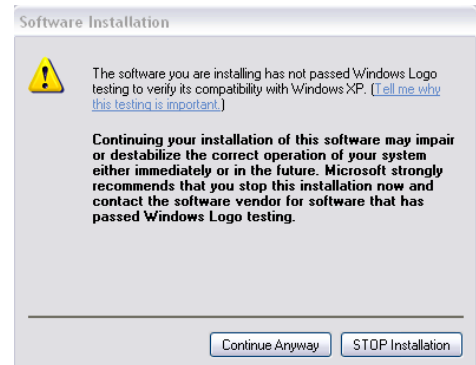


Fig.5

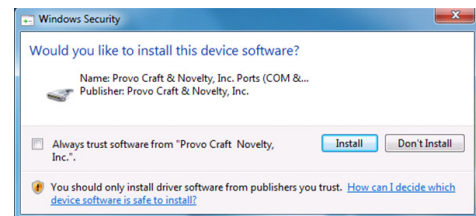


Fig.6

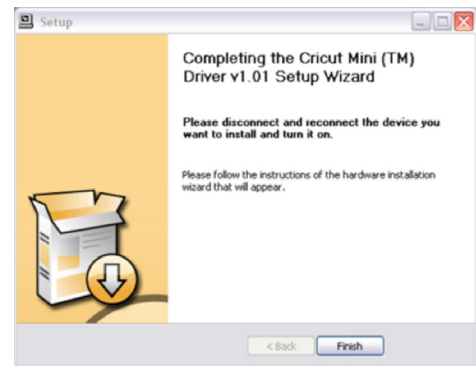


Fig.7



Fig.8

Step 8: Now complete the process by installing any Windows driver installation prompts that may appear.

You have successfully installed your Cricut Mini™ drivers! You can now log in to Cricut Craft Room™ design tool and cut projects with your Cricut Mini™ machine.